

## The OA KneeTrac Decompression Knee Brace

The DDS OA KneeTrac is the perfect solution for moderate to severe osteoarthritis of the knee joint. Our revolutionary Fulcrum-Smart Leverage Traction System coupled with our Intelli-H Frame Design sets our product apart from all other OA knee braces on the market.

Traditional knee braces use opposing lateral pressure to open up and unload the affected (knee) compartment. The DDS OA Kneetrac unloads BOTH the medial and lateral compartments simultaneously using the revolutionary Leverage Traction System with Fulcrum-Smart technology which incorporates a uniquely designed triangular shaped hinge to provide decompression to the knee joint. This reduction of pressure on the joint supports and stabilizes the knee, eases pain and assists with active rehabilitation.

The posterior straps anchor on top of the calf muscle and to the bottom of the hamstring. As the leg extends the LTS Hinge articulates with the body's natural movement, gently pulling in opposite directions. This action decompresses and unloads the entire knee joint. Standard braces only unload one knee compartment at the expense of the other.

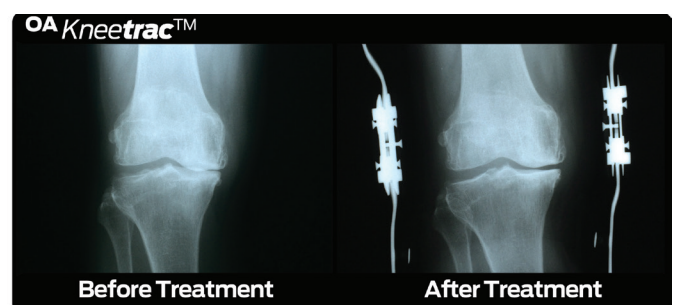
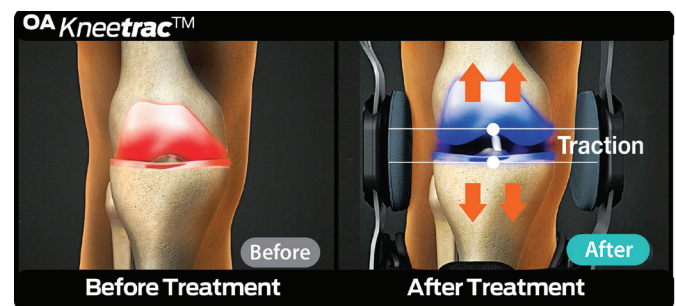


### **Before Treatment:**

Osteoarthritis in the knee is the reduction of the natural cushioning between the femur and the tibia. When this occurs, the bones rub more closely against each other which often can cause pain, swelling and limited mobility.

### **After Treatment:**

Weight is displaced from the affected knee. There is less contact between the bones and pain is relieved. Swelling is reduced with an increase in mobility.



# OA Kneetrac™

## Benefits

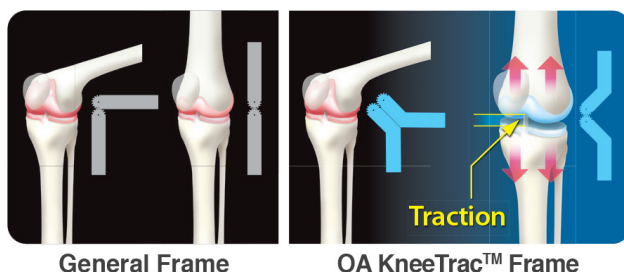
- Reduces the need for pain medication
- Alternative to surgery
- Improves knee joint functions
- Supports and stabilizes the knee
- Increases mobility
- Super lightweight aircraft material
- Accepted by most private insurance companies.
- Interchangeable Angle Lock System is fully customizable according to the patient's needs.
- The OA KneeTrac's innovative technology effectively unloads both compartments of the knee joint simultaneously.
- Ergonomically designed to fit comfortably.

## LTS TECHNOLOGY



## Intelli-H Frame Design

Unique Intelli-H Frame design is blended at the hinge point with our Fulcrum-Smart Triangular Shaped LTS Hinge, the DDS OA KneeTrac unloads the entire knee joint as the leg transitions from bent to extended positions



With our Fulcrum-Smart Triangular Shaped LTS hinge design, the knee joint acts as a natural lever displacing weight off of the entire knee joint with minimal effort.



## Angle Lock System

DDS OA KneeTrac Angle Lock System is the perfect solution for patients who require restricted movement of the leg during their rehabilitation period

### KNEE BRACE SIZING CHART

Size	*Thigh 6" Above Center of Knee	*Center of Knee	*Calf 6" Below Center of Knee
XS	7" ~ 15.5"	12" ~ 13"	10" ~ 12"
S	15.5" ~ 18.5"	13" ~ 14"	12" ~ 14"
M	18.5" ~ 21"	14" ~ 15"	14" ~ 16"
L	21" ~ 23.5"	15" ~ 17"	16" ~ 18"
XL	23.5" ~ 26.5"	17" ~ 19"	18" ~ 20"
2XL	26.5" ~ 29.5"	19" ~ 21"	20" ~ 22"
3XL	29.5" ~ 32"	21" ~ 23"	22" ~ 24"

\*If the Kneetrac™ is for the left leg then the measurements must be taken from the left leg. If the Kneetrac™ is for the right leg then the measurements must be taken from the right leg.